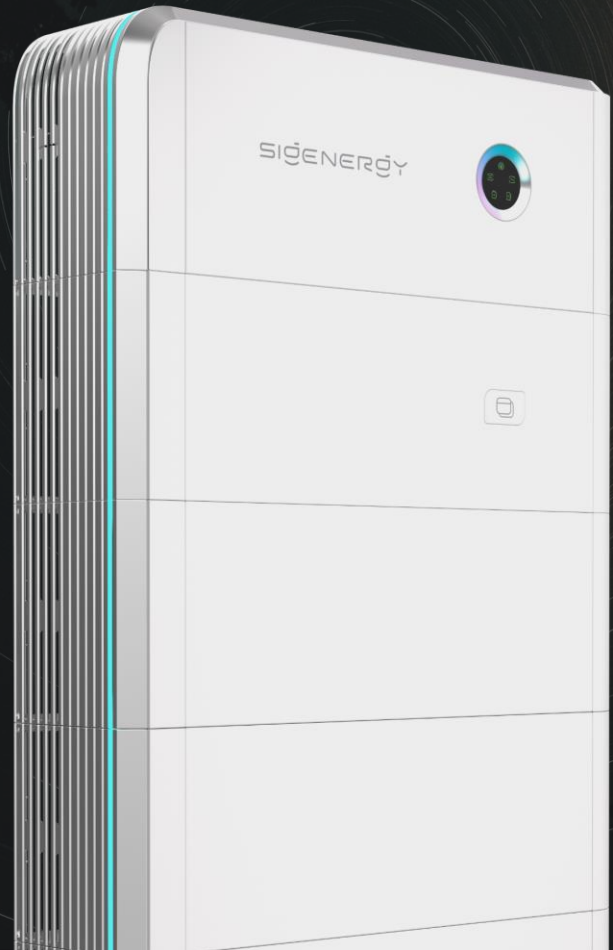


SigenStor

The world's first
5-in-One



DC Charging

Integrated into solar + ESS
system for **the first time**

Sigen AI

The world's first GPT-4
empowered energy App

0 ms

Load-side disruption

V2X

Bi-directional charging

5-layer

Battery safety protection

280 Ah

Long cycle-life battery cell

15 mins

Stackable installation

5 mins

Fast commissioning



Sigen Energy Controller
for solar + energy storage system

**Sigen EV DC
Charging Module**
Ready for V2X

Sigen Battery
1 - 6 batteries per stack

5 - 48 kWh
energy capacity range per stack

AC output powers (kW)

Single phase

3.0 3.68 4.0 4.6 5.0 6.0

Three phase

5.0 6.0 8.0 10.0 12.0 15.0 17.0 20.0 25.0

Bi-directional charging (kW)

12.5 25.0

Battery capacity (kWh)

5.0 8.0




25 kW

DC fast charging



* The actual available mileage after charging 1 hour

Traditional Charger 7 kW  40 km

SigenStor EVDC 25 kW  130 km

V2X

Bi-directional charging





V2H : backup your home with your EV





V2G: peak shaving and VPP dispatch

Smart control via mySigen App

-  Real-time charging status & remote control
-  Multiple charging modes

Compatible with EVs of different voltage levels

-  400V EV full speed charging
-  800V EV full speed charging



Case B ▲

Charging Power
7 / 11 / 22 kW

Charging Interfaces
Type1 / Type2
/ Type2 socket with shutter

Communication
WLAN / 4G / FE



Case C ►

Flexible routing

Top/Bottom routing
Meet different installation scenarios



Top routing

Bottom routing

IK10
impact proof

IP65
protection rating

55°C
no power derating

4000 m
no power derating

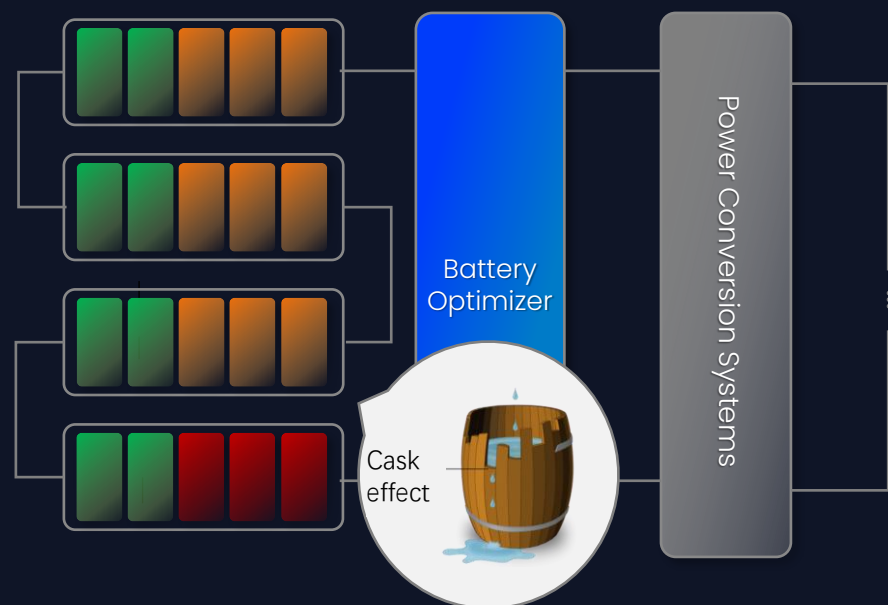


"Click-in" design

15 mins
easy installation

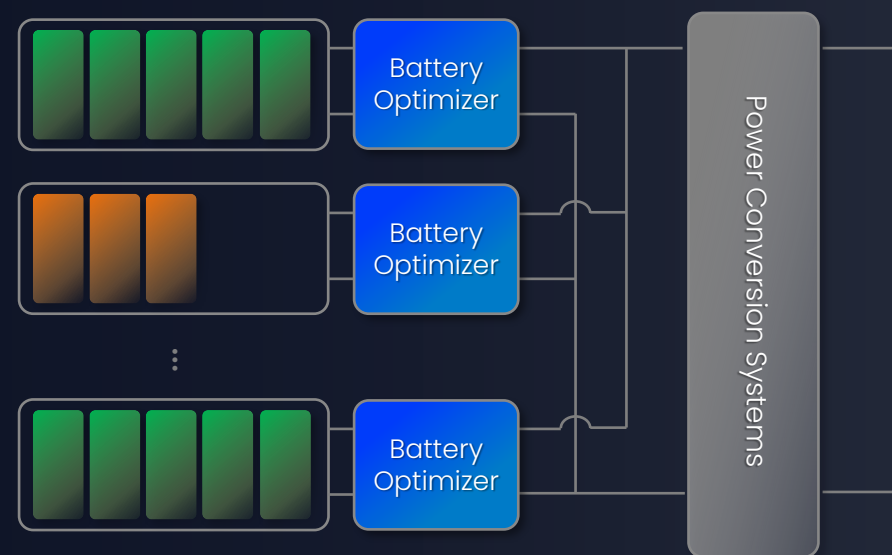
Parallel Connection

Traditional series connection



Mismatch: Aging or failure of any battery pack can degrade the performance of the whole battery system.

Battery parallel connection



No pack-mismatch: Flexible mix of packs among different battery SOH or SOC or different cell models

AI Mode with Dynamic Tariff



Automatic data access

No manual setting, AI automatically finds utility rate plan

Maximize savings

Real-time computing continuously adjusts operating strategy

Clear display

Savings are trackable and visible in chart format & calendar

> **60%** MPPTs

16 MPPTs for 100 kW

< **50%** footprint

Higher energy density

1 click

Full system diagnosis

10 mins

Fast commissioning

SigenStors

SigenStor connected in parallel for on-grid scenario



5 ~ 750 kWac

Max. AC output power

5 ~ 1440 kWh

Max. ESS capacity

IP66

Free of maintenance during lifetime

350 ms

Industry-leading zero power injection

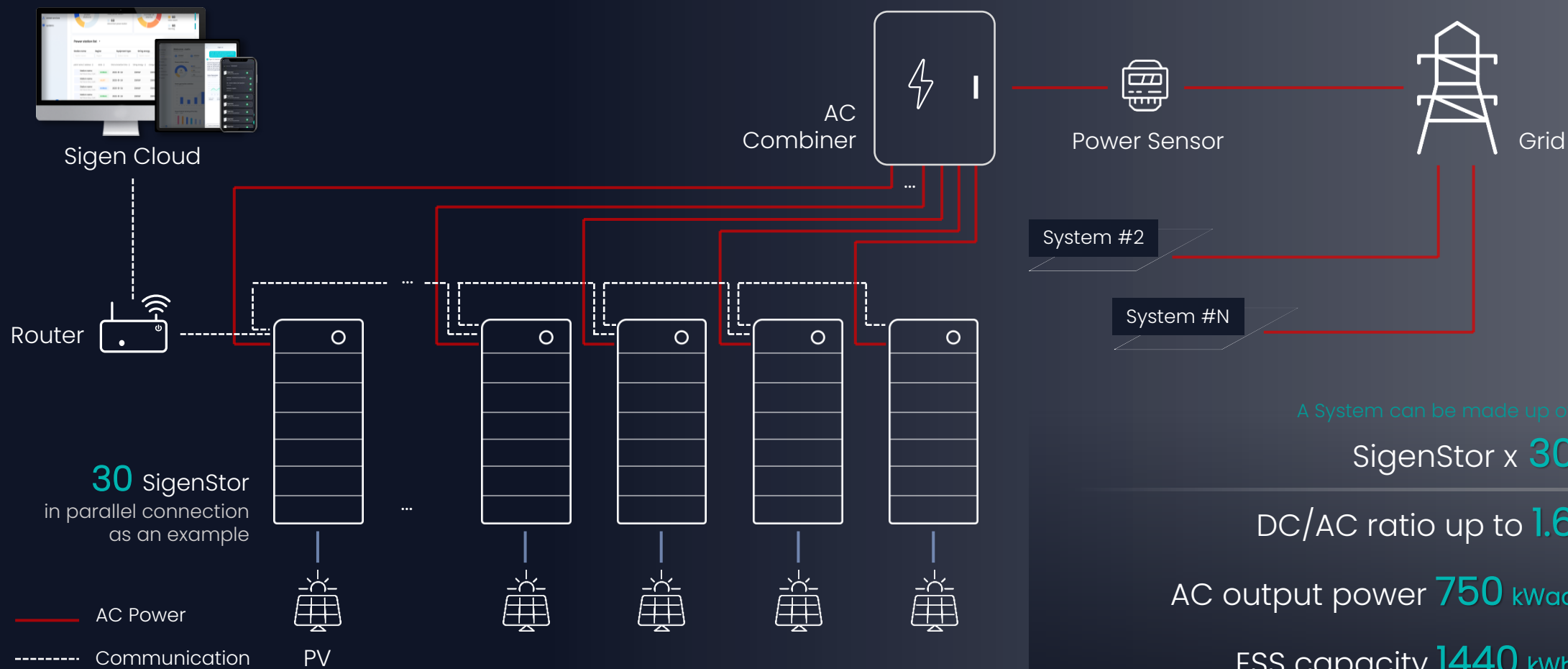
Minimal O&M

Saving OPEX

Dynamic tariff

To maximize savings

On-grid system



A System can be made up of:

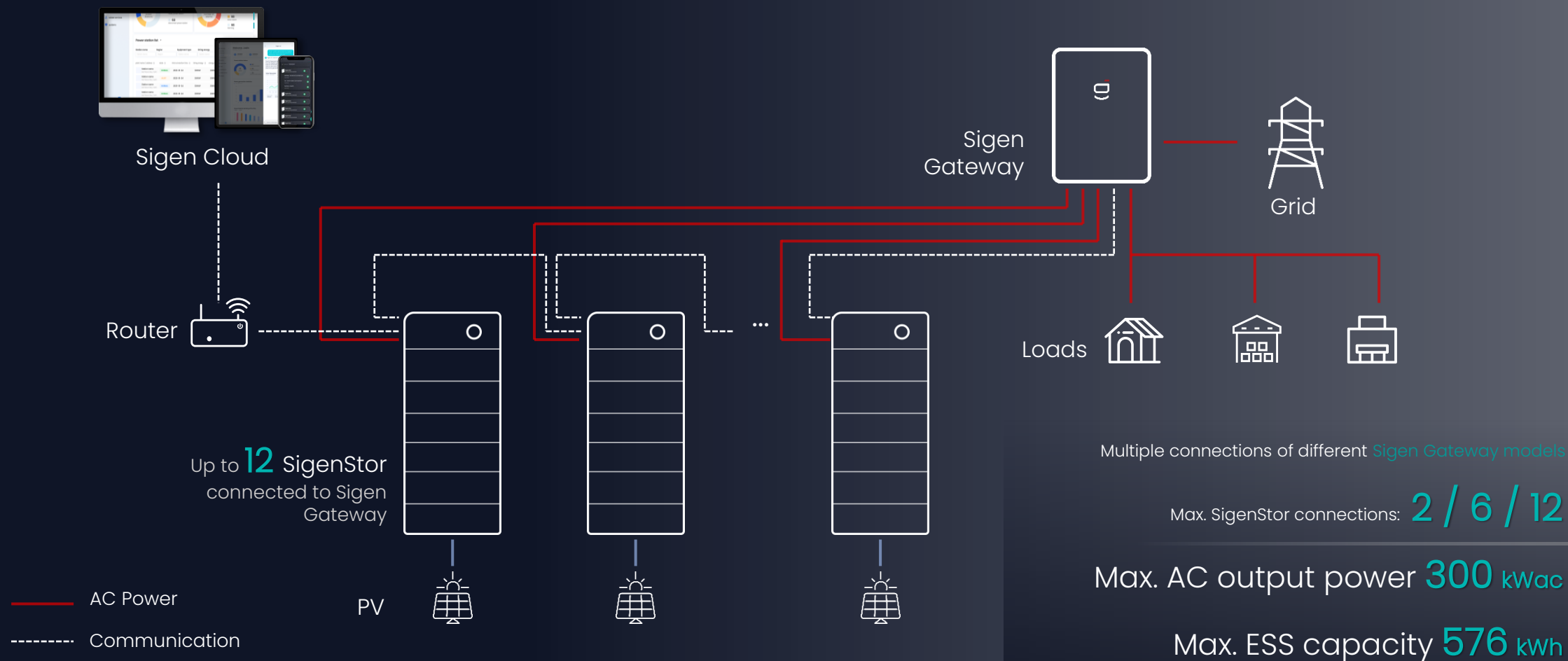
SigenStor x **30**

DC/AC ratio up to **1.6**

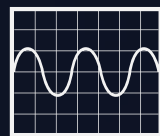
AC output power **750 kW_{ac}**

ESS capacity **1440 kWh**

Hybrid system



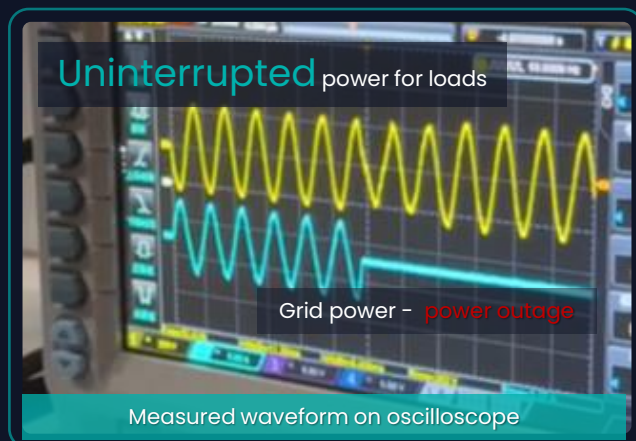
Seamless



Sigen Power Control Algorithm

Ensure power is always stable

Switch-over between on-grid and off-grid mode



Seamless

Sever & Computer 20 ms

LED lamp 41 ms

Air conditioner 100 ms

500 ms
Incandescent lamp

Energy hub for your business

Sigen Gateway HomeMax TP

On-grid / Backup power **50 kW**



SigenStor x **2**

Backup loads

Generator/
Smart loads

Sigen Gateway C120-6

On-grid / Backup power **120 kW**



SigenStor x **6**

Generator/
Smart loads

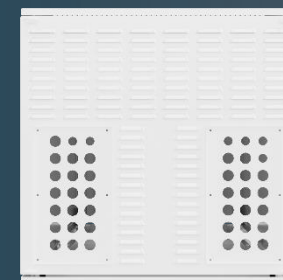
Backup loads

Sigen Gateway C300-12

On-grid / Backup power **300 kW**



Easy top routing



SigenStor

Max. **12**

Nominal current for
Generator connection

456 A

Generator smart control



Generator
2-wire start
supported

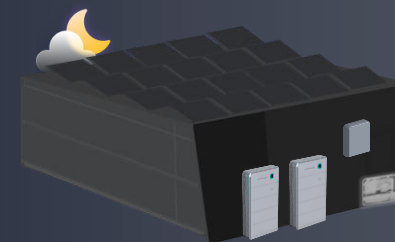
Smart Home Devices



10 kW
Generator



Remote
control & monitoring
by mySigen APP

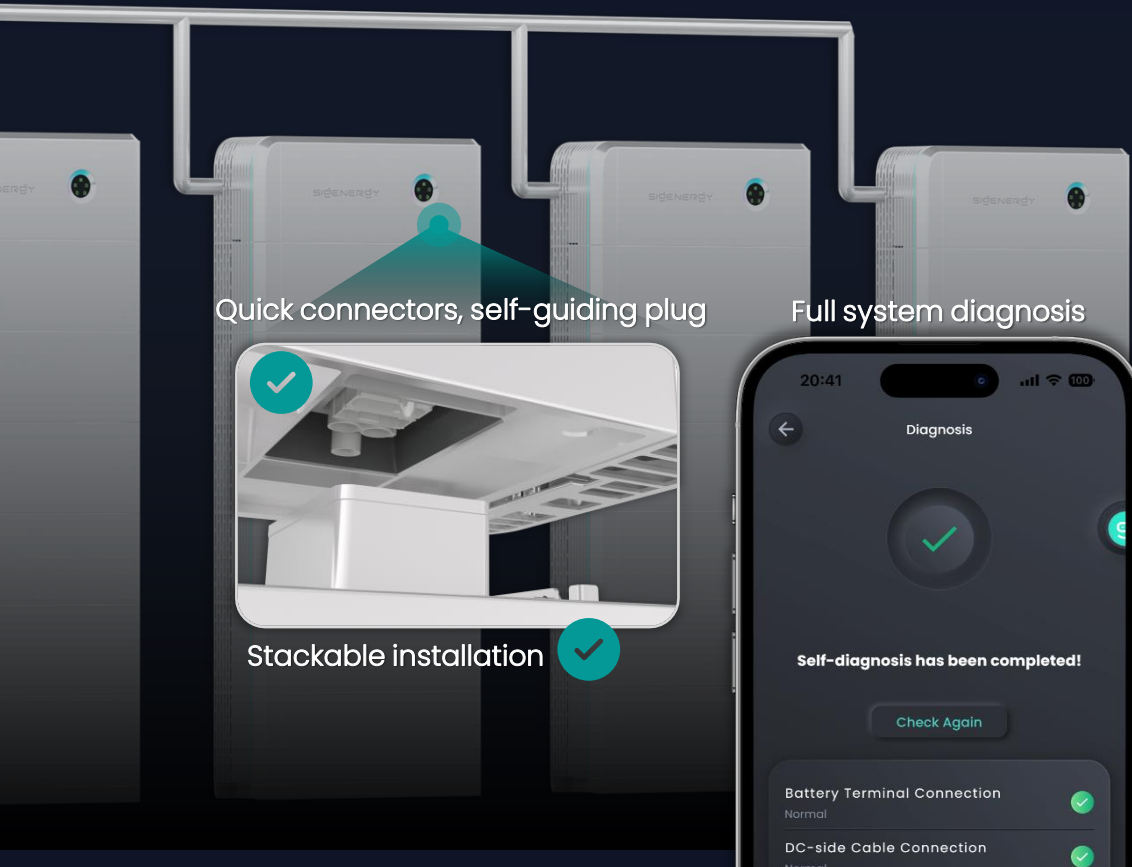


Abundant
backup power
for your business

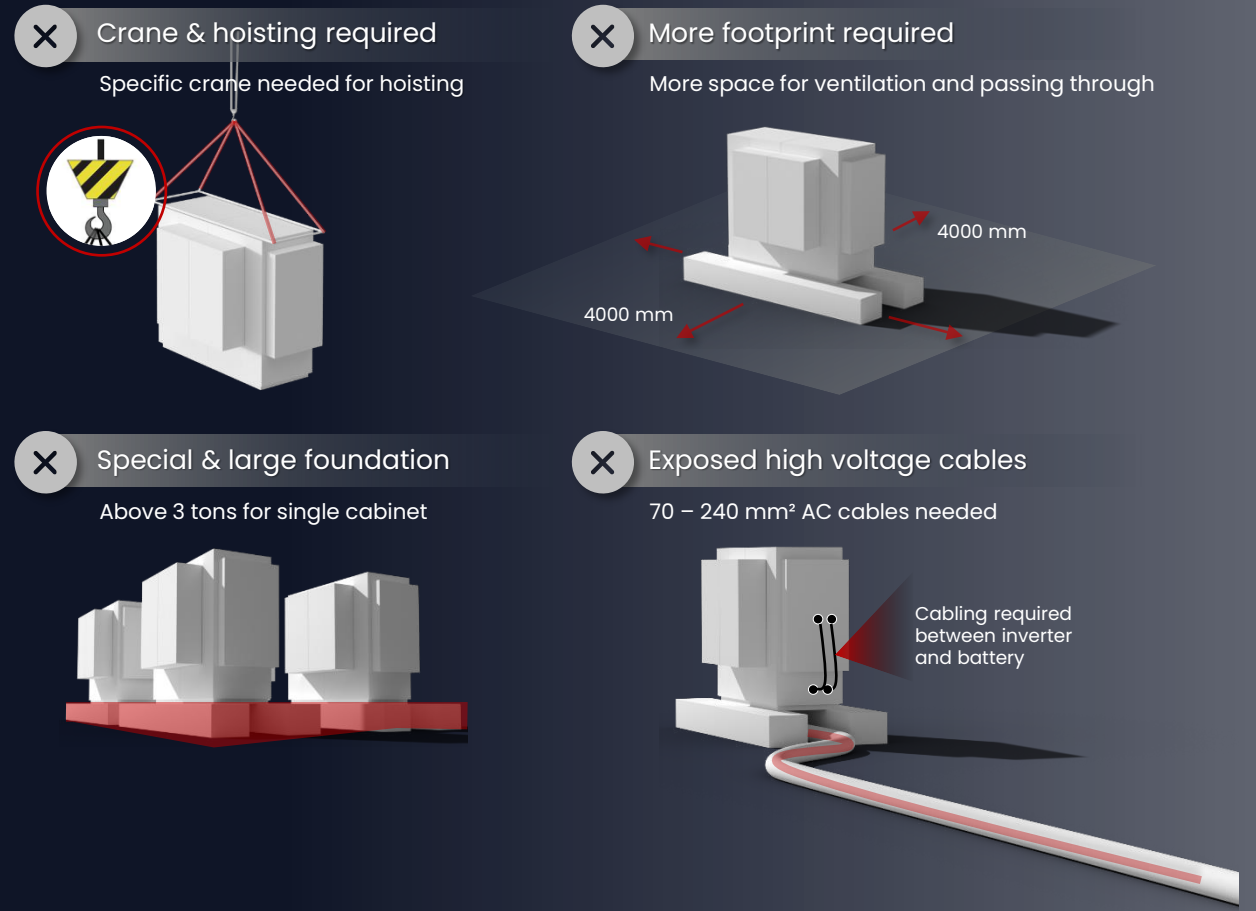
Ultra fast installation

Sigenergy, Simple and stackable

Manual work only | Lighter per stack | Thinner AC cables



Traditional solution, Complex installation



Easy Operation & Maintenance

IP66

No worry of outdoor application



No need for SOC calibration

= 0

Annual O&M Cost



One-click diagnosis

No requirement of regular on-site testing

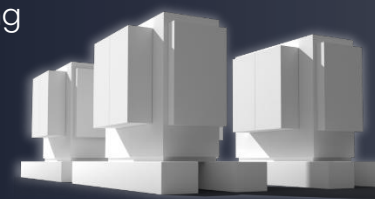
IP54



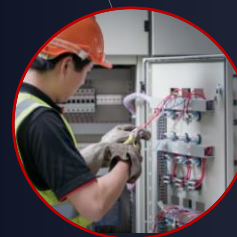
Strainer Cleaning



Shutdown checked



Safety function checked



Wiring Status checked

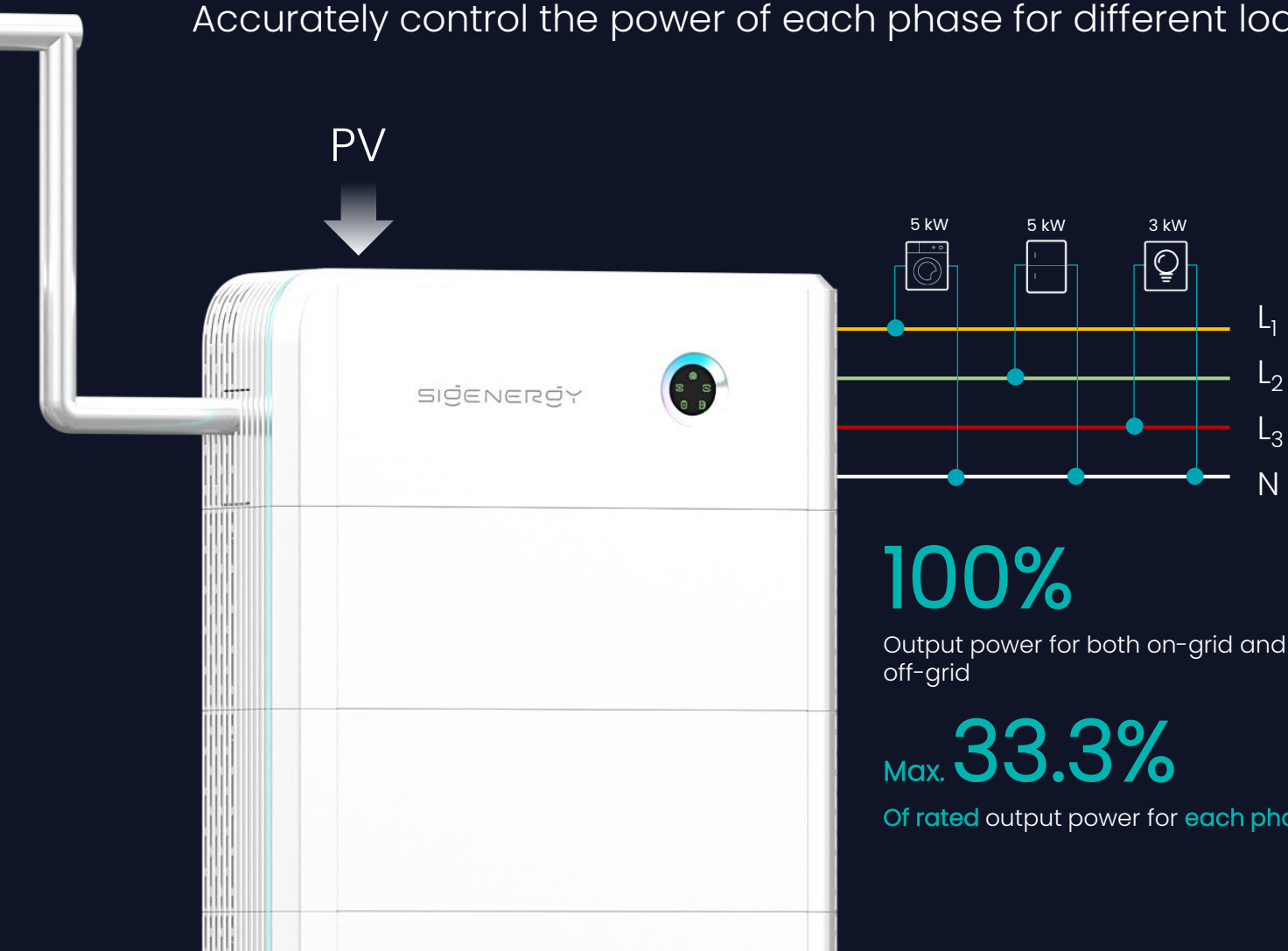


Liquid cooling unit checked

...

Unbalanced 3-phase power output

Accurately control the power of each phase for different loads



100%

Output power for both on-grid and off-grid

Max. **33.3%**

Of rated output power for each phase

