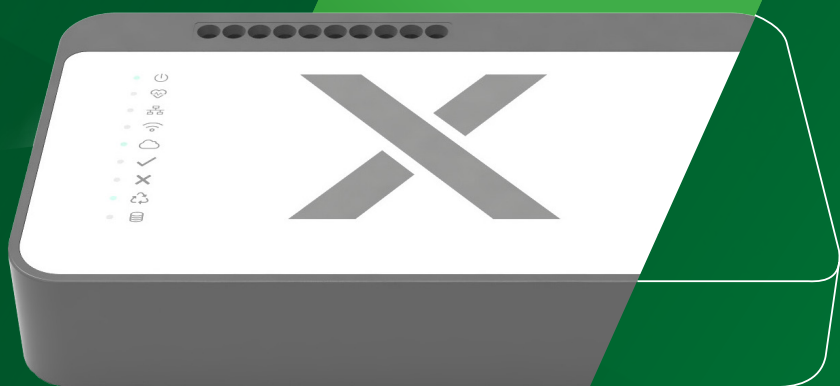


KAISAI



Owner's manual

KAISAI X LITE
KXL-01





CENTRAL

KXL-01

Owner's manual

Thank you for choosing our product.

To ensure correct operation, please read this manual carefully and keep it for future reference.

If you have lost the user manual, please contact your local distributor or visit www.kaisai.com or send an email to: handlowy@kaisai.com to obtain an electronic version of the manual.

Contents

- 1. Description of control lights 6
- 2. Installation 6
- 3. Connection 6
- 4. Cloud Service - Creating a User and Installer Account 8
- 5. First setup 9
- 6. First setup - WiFi (phone and PC) 14
- 7. First steps 16
- 8. Central device - ownership change 17
- 9. Adding virtual devices - custom device 19
- 10. Recovery mode 21
- 11. Technical specification 21
- 12. Note 21
- 13. EU Declaration of conformity 22

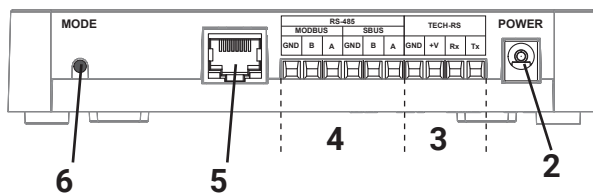
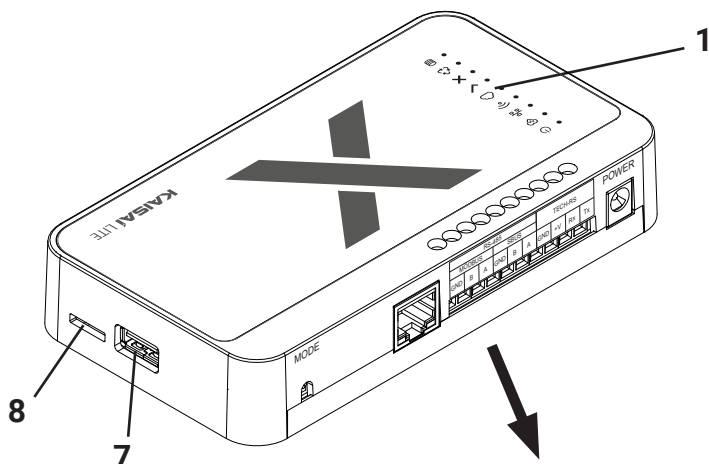
Manual version: 02

25.02.2025

After the manual was edited, changes may have been made to the products listed therein.
The manufacturer reserves the right to make changes. Illustrations may include additional equipment.
Printing technology may affect differences in the colors shown.

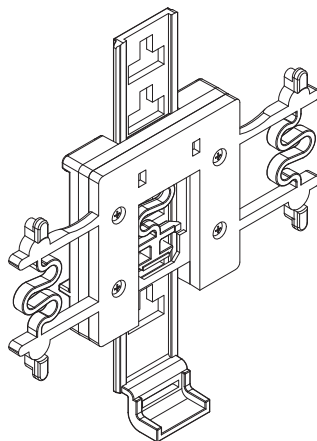
The current instructions are available on the website <https://dokumentacja.klima-therm.com/>





EN


- 1 - control lights
- 2 - AC adapter input
- 3 - TECH-RS connector
- 4 - RS-485 connector
- 5 - RJ-45 port
- 6 - MODE button
- 7 - USB 2.0 MicroSD card
- 8 - MicroSD card



The set includes a hanger for a DIN 25 rail

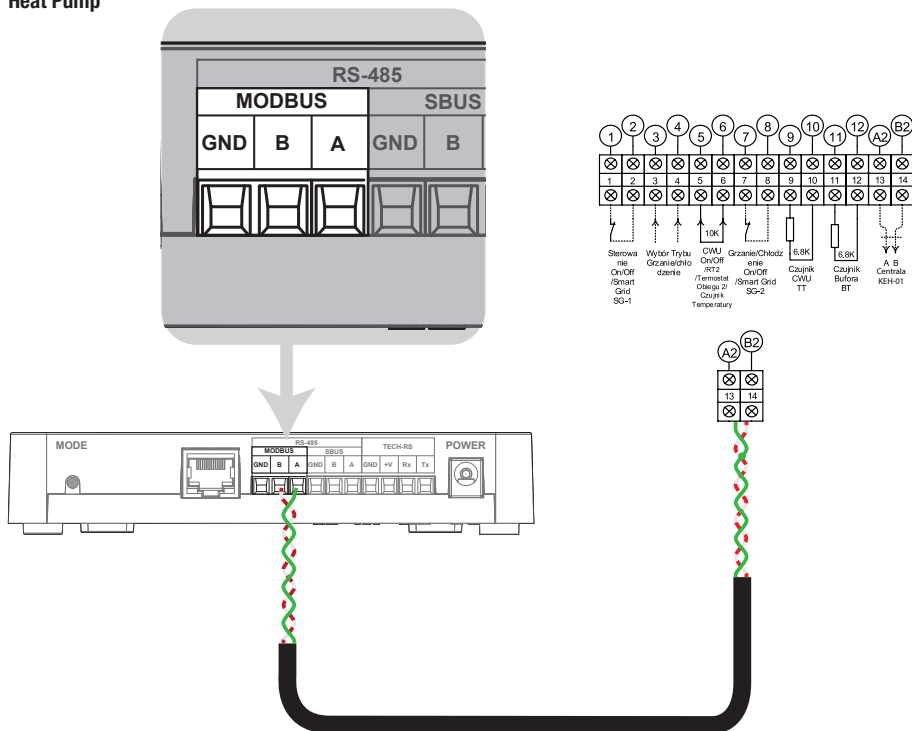
-  - power supply ON
-  - device operation
-  - active LAN connection
-  - active WiFi connection
-  - active access to the Cloud service
-  - normal device operation
-  - service error
-  - recovery mode - emergency operation
-  - internal memory operation

2. Installation

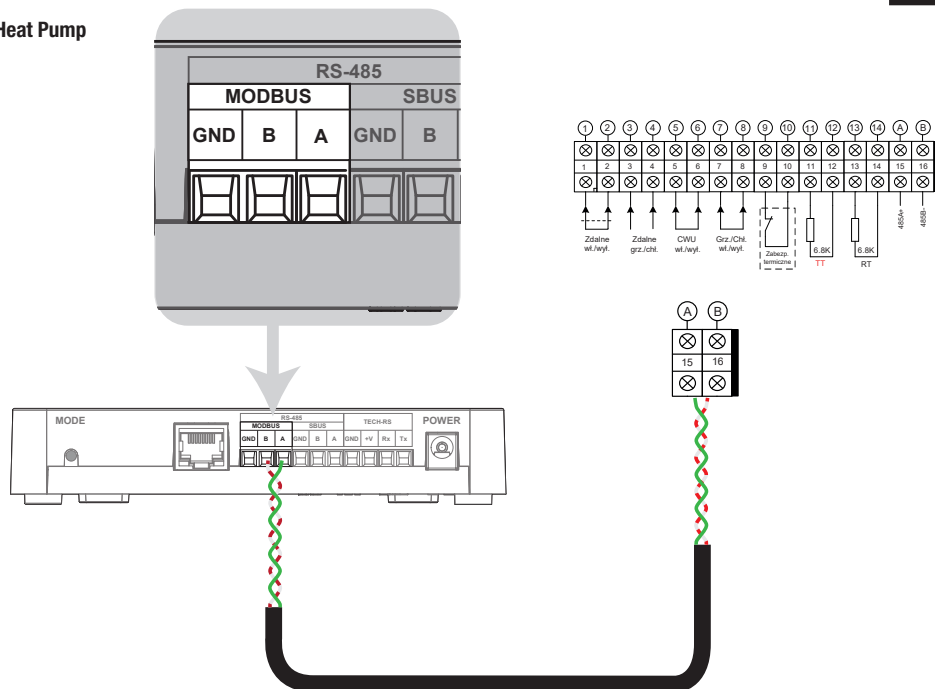
1. Connect the power supply included in the set to the power socket in the Kaisai central device.
2. Connect the Ethernet (network) cable and plug it into your home router.
3. Correct start-up is indicated by a lit control light  after about 45 second.

3. Connection

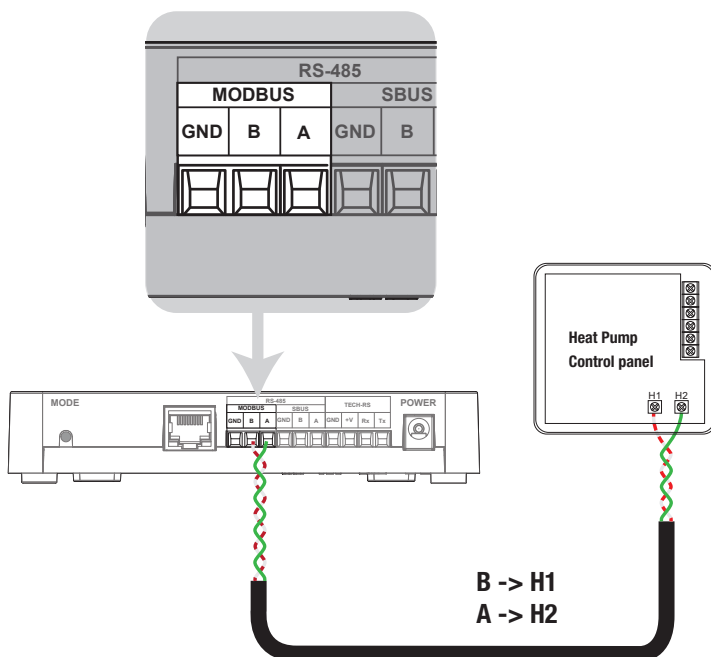
KHY Heat Pump



KHx Heat Pump



KHA / KHC / KHM Heat Pump



1. To use remote access to the Kaisai Central and devices connected to it, you need to register for the Cloud service at <https://kaisaix.com> or through the **KAISAI X** app, available for both Android and iOS systems. Follow the on-screen instructions.

App
KAISAI X :

Google Play



App Store



2. Here we can create a Sinum account for both the client and the installer - this is necessary to later obtain installer access. A client with an account linked to the central device holds the status of Super Administrator, which allows them to add and remove users, grant access to the installer, but they themselves cannot be removed from the central. An installer account provides access to client's centrals for technical support and diagnostics, as long as the client has granted such access.

All logins to the central device are logged and available for review in **Settings -> Users -> Login history**

IMPORTANT! If you are a client, do not create an installer account.

If you are an installer, when creating the account, you must select: „I am an installer“!!!

3. Activate your Cloud account by clicking the link received in your email.
4. To fully use the device's capabilities, log in by entering the Kaisai Central address in your browser.

Once the Kaisai central device is connected, the first configuration needs to be performed. This can be done by connecting the central device to the network either via Ethernet or WIFI. In both cases, the first configuration of the central device can be performed using either a phone or a computer. When using the phone app, there is no need to download a separate app to search for central devices, as the KAISAI X app has this feature built-in.

Option 1 - First configuration via PC

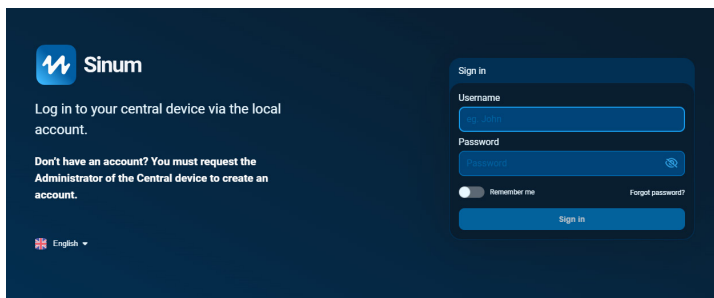
Connect the Kaisai central device to the network device (router, switch) using an Ethernet cable.

Launch a web browser* and go to the website at <https://tech-controllers.com/sinum-1/sinumfind>

On this page, you need to download the application to search for central devices for Windows/iOS/Linux, which allows you to find the central device without requiring internet access.

Local devices list					REFRESH
Device type	Serial Number	Host name	Sinum Device version	Address	
Sinum Central	04f133154512244351147f6786f0b4200	sinum-ole-prod	1.15.1	192.168.1.141	GO
Sinum Central	04f18a443122320b0967f6786f0b4200	sinum-ole-stage	1.15.0-rc.2	192.168.1.146	GO
Sinum Central	04f132054512232091147f6786f0b4200	Aleksandra-dev	1.16.0-alpha.7	192.168.1.159	GO
Sinum Central	04f1a935512233162947f6786f0b4200	sinum	1.15.1	192.168.1.170	GO

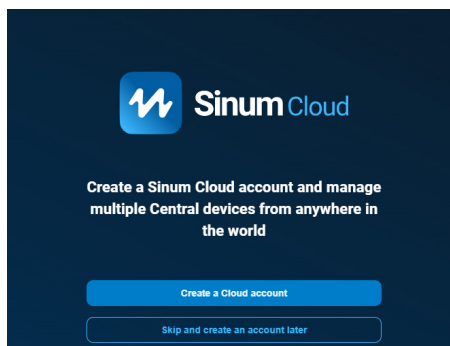
Select your central device and click **GO**. Then a login window will appear where you need to enter the **login: admin, password: admin**.



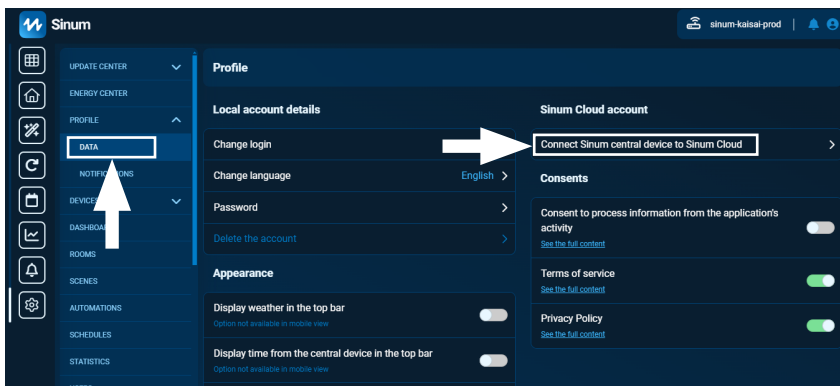
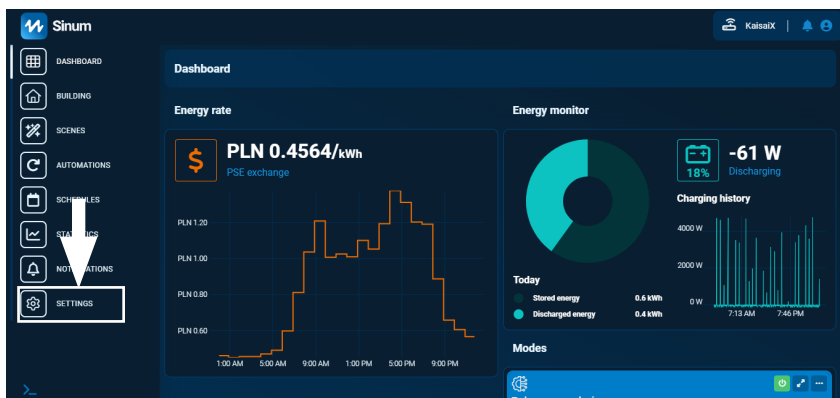
The image shows the Sinum login interface. On the left, there is a Sinum logo and text: "Log in to your central device via the local account." Below this, it says: "Don't have an account? You must request the Administrator of the Central device to create an account." At the bottom left, there is a language selector showing "English". On the right, there is a "Sign in" form with fields for "Username" (containing "admin") and "Password" (containing "admin"). There are checkboxes for "Remember me" and a link for "Forgot password?". A "Sign in" button is at the bottom of the form.

* recommended browsers are Chrome/Firefox/Safari

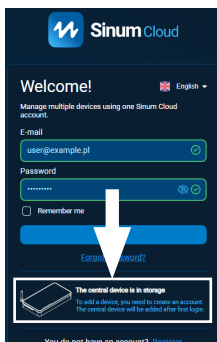
After logging in, the page will ask us if you want to create a Cloud account. If you already have an account, select „Skip” and create the account later.



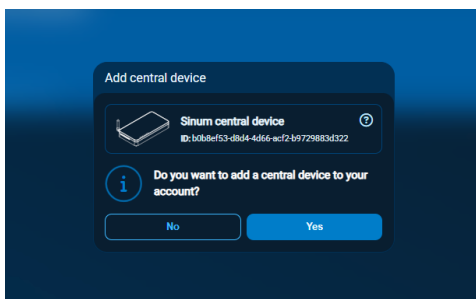
Next, go to the central device itself and select **Settings -> Profile -> Data -> Connect Sinum central device to Sinum Cloud**



Then the page will take us to the login screen for our Cloud account and below it will appear information that the given central device is in the clipboard.

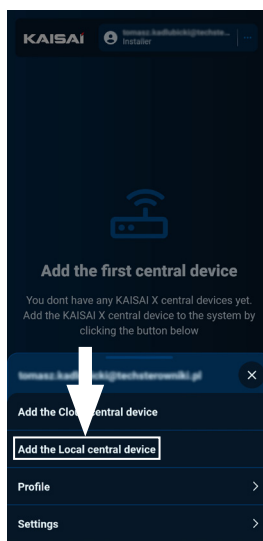
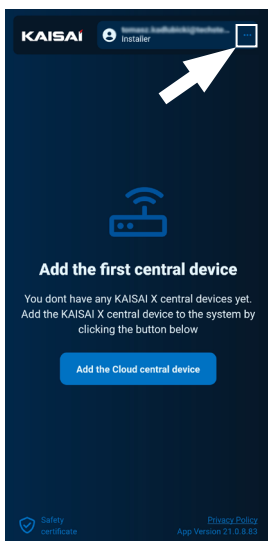


After logging in, we will be asked if we want to add the central device to our account.

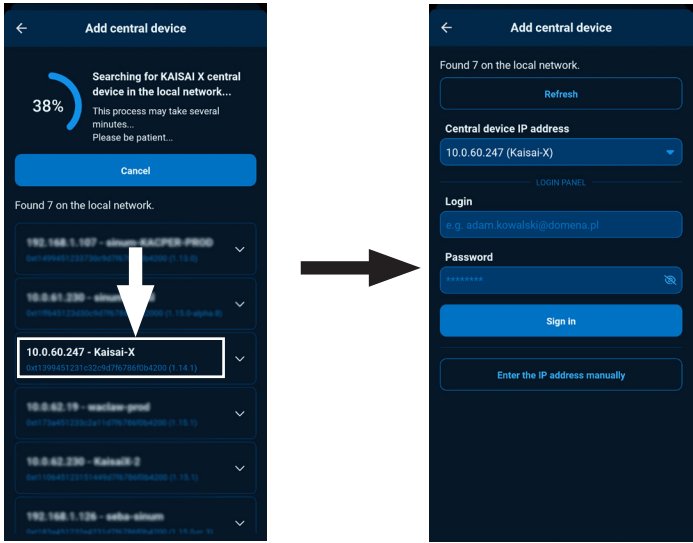


Option 2 - First phone configuration

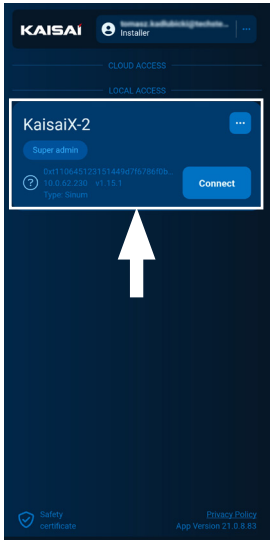
We go to the application and press the three dots in the upper right corner and then add the central device locally.



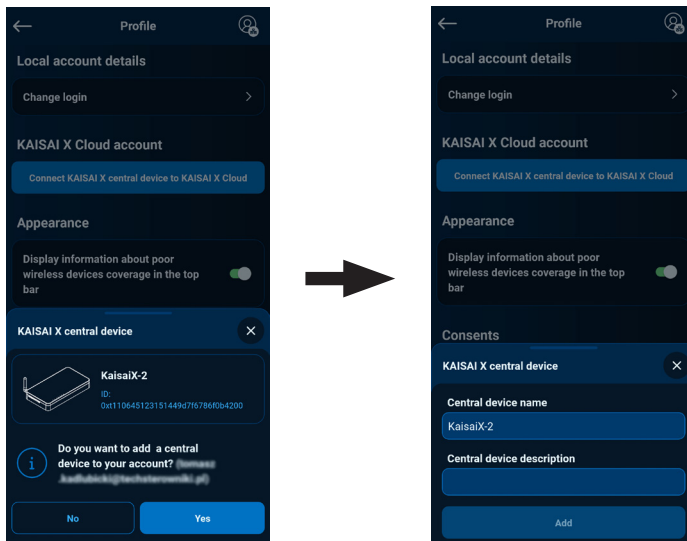
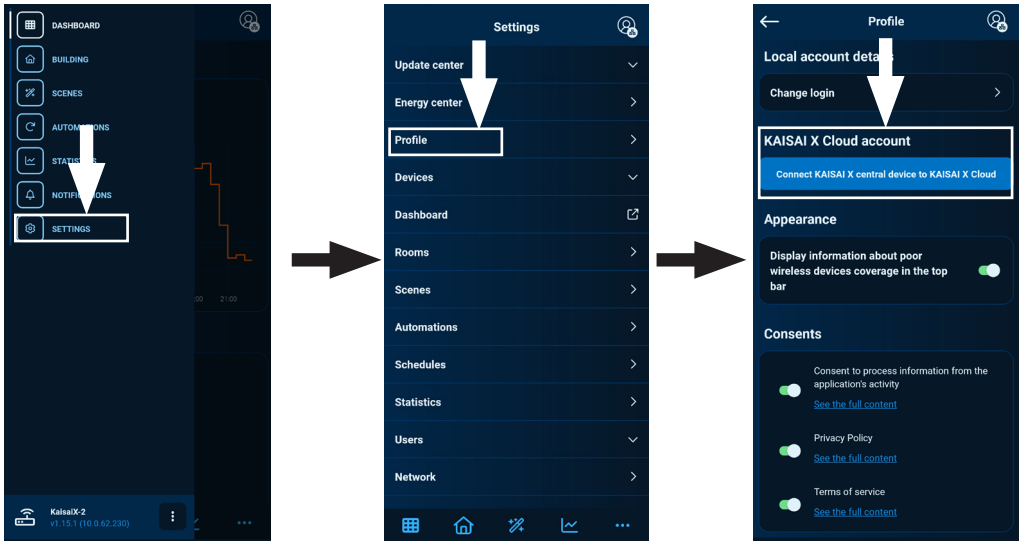
After searching, a list of available central devices will appear. After clicking on the central device, a screen will appear with the option to log in to it locally. Each Kaisai central device has a factory **login: admin** and **password: admin**.



After logging in, the central device will appear in the application as „**Local access**”

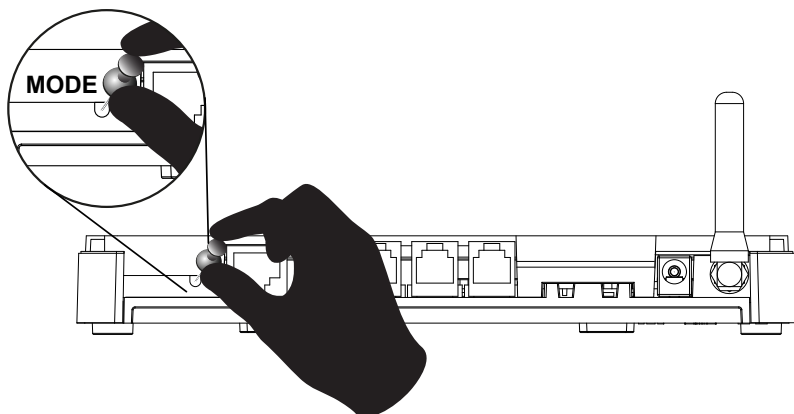



After going to the central device, just like in the case of a PC, go to **Settings -> Profile -> Connect KAISAI X central device to KAISAI X Cloud**.

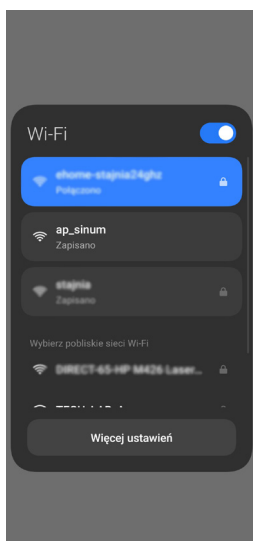


Here we can set the name under which it will be displayed and a description with additional information.

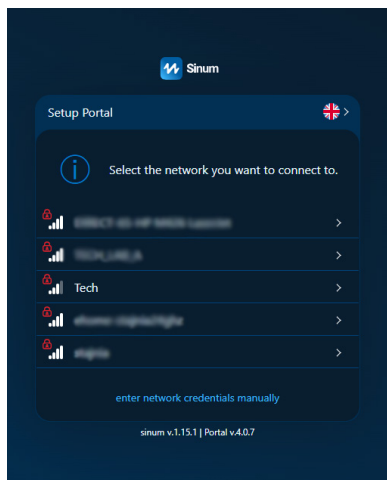
1. In the absence of a wired connection, to connect the central device to the WiFi network, switch to AccessPoint mode by removing the top part of the casing and pressing the **MODE** button at the back of the device once.



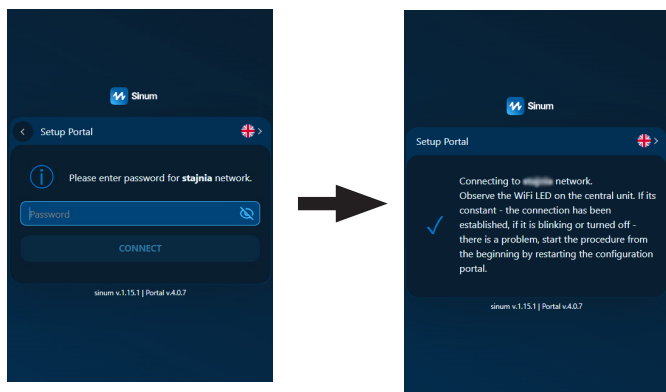
2. The active **AccessPoint** mode is indicated by a steady flashing of the Wi-Fi connection LED  (the fourth from the top)
3. On your phone or computer, enable WiFi network search.
4. Connect to the wireless network named "**ap_sinum**" or scan the QR code, which will allow you to connect to this network.



5. After connection, a list of available WiFi networks will appear, which is downloaded when AccessPoint mode in central device is active. To refresh the list of networks, restart the device in AccessPoint mode. Optionally, you can enter the address "4.3.2.1" in the browser.



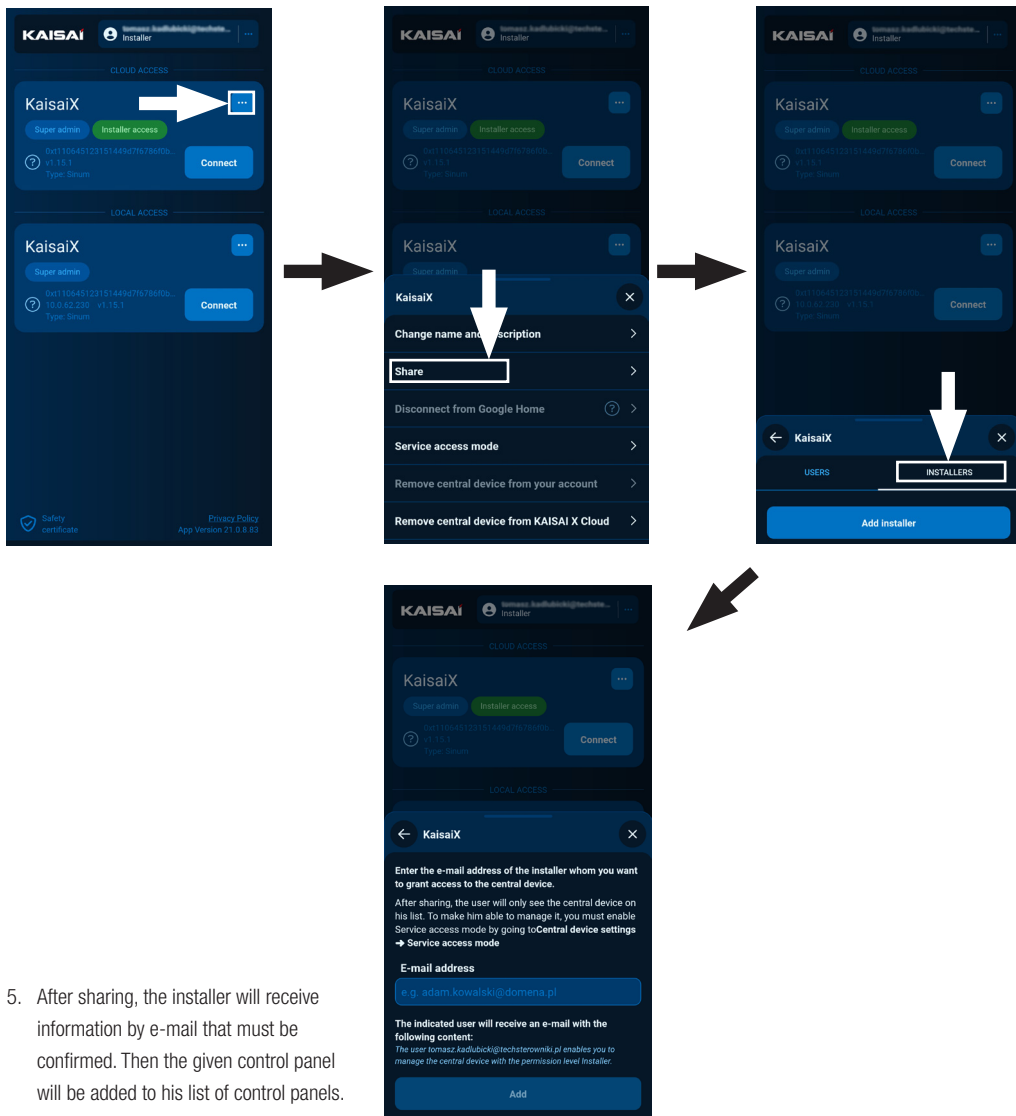
6. Select the network you want to connect Kaisai central device. After selecting, you will be asked for the network password and after entering the password, a message about connecting to the network will appear.



7. Switch your computer/phone to the same WiFi network that your Kaisai central device is connected to.
8. **WiFi configuration - PC and phone** - is identical to the wired configuration - PC (page 9), phone (page 11)

IMPORTANT - The router must have device visibility enabled in the network because otherwise Sinum Finder will not find the central device.

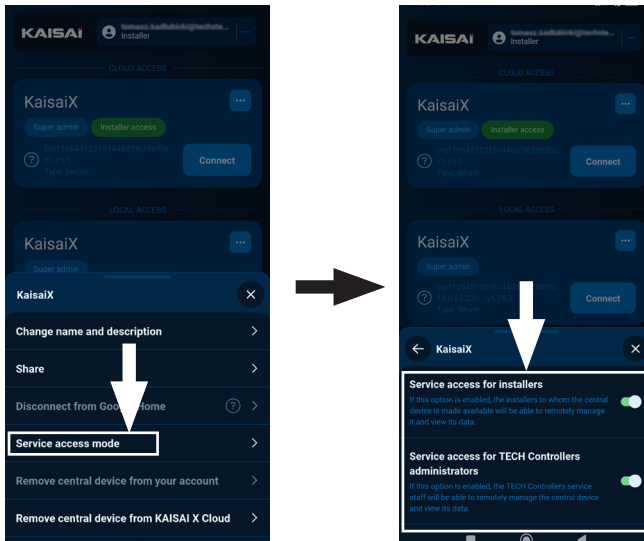
- After successful configuration, log in to Sinum Cloud via the website or app.
Once logged in, you can change the local account password by going to **Settings -> Profile -> Data**, under the **Local account details** tab.
- Then go to **Settings -> Update Center** and update the software to the latest version. The update can also be performed by connecting a USB flash drive with the appropriate file to the USB port.
- Set the correct time zone for your location by going to **Settings -> Time, location, weather**.
- To use remote control, you need to configure the Cloud service. You can share your device with an installer (who must also create an account on the Sinum Cloud portal). Sharing the device with an installer is available after logging into Sinum Cloud -> list of central devices.



- After sharing, the installer will receive information by e-mail that must be confirmed. Then the given control panel will be added to his list of control panels.

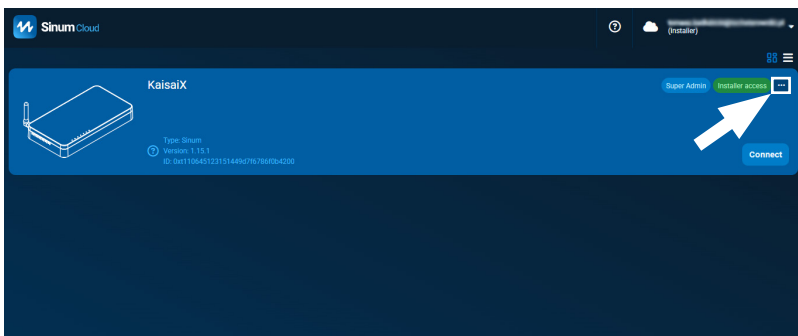
1. Additionally, you should check whether the access for the installer is enabled in the **Service access mode**.

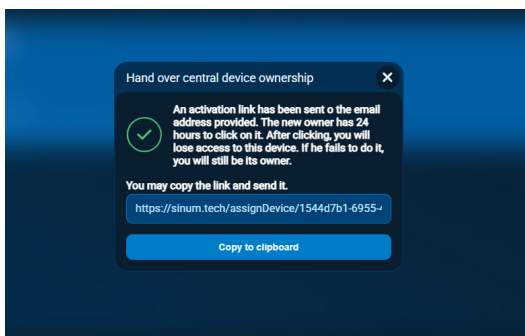
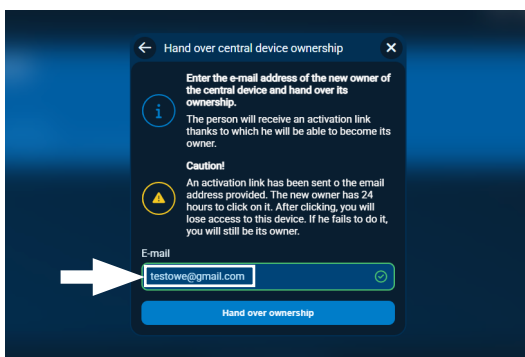
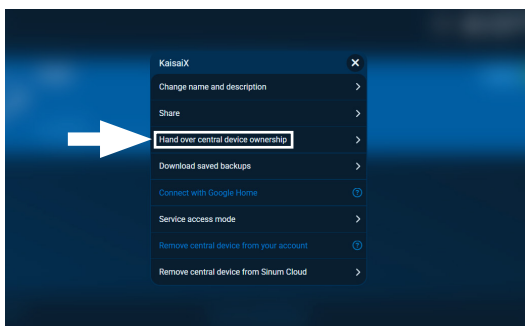
Note: If we do not select access for the installer and administrators, technical support for this central device will be impossible.



8. Central device - ownership change

It is recommended to configure the central device with the customer's final cloud account. However, if necessary, the central device can be registered under the installer's account and then transferred to the final customer. Note: This option is not available through the app. To do this, in the list of central devices, select three dots -> **Hand over central device ownership** -> enter the email address of the person to whom you are transferring the central device (they must have a cloud account).





Once the ownership transferred, a message with a link will be sent to the provided email address for acceptance. This link will automatically assign ownership of the central device ownership (Super Admin status) to the specified account.

The link is valid for 24 hours. After transferring ownership, the person transferring the central will recieve Administrator status until the Super Admin either removes or changes their role. Three dots -> **Share** -> **Edit or remove**



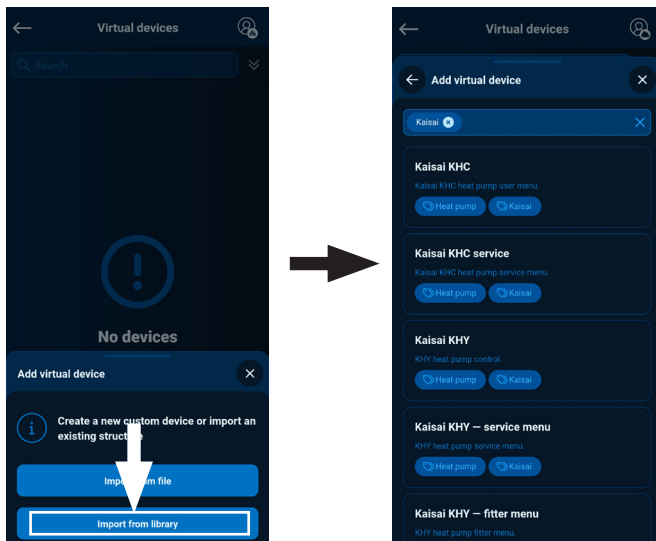
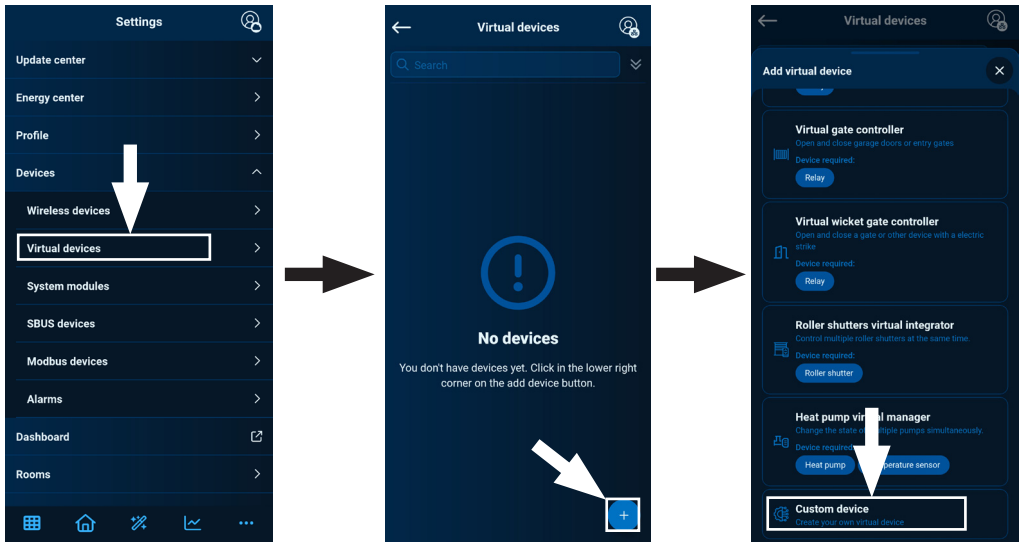
The user can decide whether they want to receive notifications about alarm (default is off), by selecting the preferred notification method (email, push, snackbar). Changes can be made in **Settings -> Profile -> Notifications**, where the selections is made in the „**Virtual Devices**“ group.

Virtual devices - custom devices refersto a specially written automation used to control a specific device through the Kaisai control panel. These devices are stored in the library in the Cloud service.

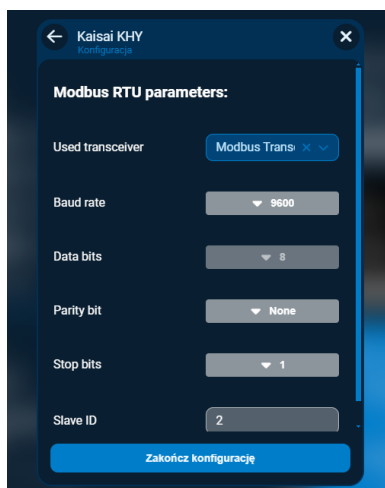
Adding a Custom Device and Configuration

1. You should go to **Settings -> Devices -> Virtual Devices** -> circle with a plus in the lower right corner -> **Custom Devices** -> **Import from Library**

Then a list of all available custom devices will open, including those related to Kaisai devices.

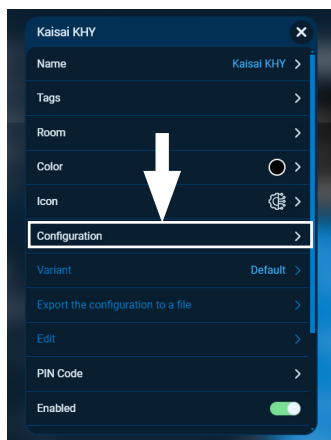
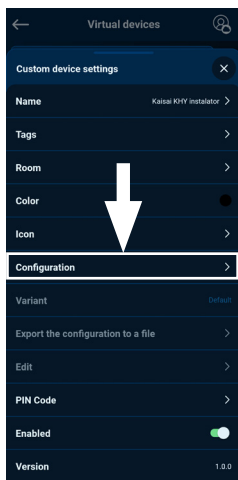
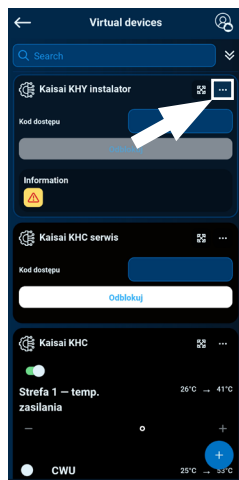


2. After selecting the custom device, a panel will appear to configure the communication.




It is important to correctly configure the modbus communication, i.e. to set the same communication parameters in the custom device as those in the controller. The default settings from the controller are chosen, but if more devices are added and they operate at a different speed, it may be necessary to change the device address or speed - Baud rate.

If a change in communication parameters is required later, go to virtual devices, select the specific custom device, click the three dots -> **Configuration**.



Mobile version

PC version

1. To start **Recovery mode** press and hold the **MODE** button on the back of the device. Then, disconnect and reconnect the power supply by holding the button for 5 seconds..
2. Active **Recovery mode** is indicated by the recovery mode control light  which goes steady on.
3. Launch your web browser* and go to <https://tech-controllers.com/sinum-1/sinumfind> or download the Sinum application on your phone to search for your Kaisai central device.
4. Connect to the Kaisai central device called "**sinum-r**".
5. The Recovery mode allows, among other things, to restore the factory settings or return to the previous version of the software by changing the system partition.

* **recommended browsers are Chrome/Firefox/Safari**

11. Technical specification

Power supply	16-30VDC typ.24VDC
Inputs	1x USB2.0, Micro SD 2x RS-485 (1x MODBUS, 1x SBUS) 1x RJ-45 Ethernet, 1x TECH-RS DC 5.5/2.5mm
Mx. power consumption	6W
Operation temperature	5 ÷ 50°C
Acceptable ambient relative humidity	<80%REL.H
Operation frequency	868MHz
Max. transmission power	do 25 mW
Transmission IEEE 802.11 b/g/n	

12. Note

Tech Sterowniki and Klima-Therm are not responsible for any damages resulting from improper use of the system. The range depends on the conditions in which the device is used and the structure and materials used in the object construction. The manufacturer reserves the right to improve devices, update software and related documentation. The graphics are provided for illustration purposes only and may differ slightly from the actual look. The diagrams serve as examples. All changes are updated on an ongoing basis on the manufacturer's website.

Before using the device for the first time, read the following regulations carefully. Not obeying these instructions may lead to personal injuries or controller damage. The device should be installed by a qualified person. It is not intended to be operated by children. It is a live electrical device. Make sure the device is disconnected from the mains before performing any activities involving the power supply (plugging cables, installing the device etc.). The device is not water resistant.

The product may not be disposed of to household waste containers. The user is obliged to transfer their used equipment to a collection point where all electric and electronic components will be recycled.



Hereby, we declare under our sole responsibility that **KXL-01** manufactured by: TECH STEROWNIKI II Sp. z o.o., head-quartered in Wieprz Biała Droga 31, 34-122 Wieprz, is compliant with Directive **2014/53/EU** of the European parliament and of the Council of 16 April 2014 on the harmonisation of the laws of the Member States relating to the making available on the market of radio equipment, Directive **2009/125/EC** establishing a framework for the setting of ecodesign requirements for energy-related products as well as the regulation by the MINISTRY OF ENTREPRENEURSHIP AND TECHNOLOGY of 24 June 2019 amending the regulation concerning the essential requirements as regards the restriction of the use of certain hazardous substances in electrical and electronic equipment, implementing provisions of Directive (EU) 2017/2102 of the European Parliament and of the Council of 15 November 2017 amending Directive 2011/65/EU on the restriction of the use of certain hazardous substances in electrical and electronic equipment (OJ L 305, 21.11.2017, p. 8).

For compliance assessment, harmonized standards were used:

- PN-EN IEC 60730-2-9 :2019-06 art. 3.1a Safety of use
- PN-EN IEC 62368-1:2020-11 art. 3.1 a Safety of use
- PN-EN 62479:2011 art. 3.1 a Safety of use
- ETSI EN 301 489-1 V2.2.3 (2019-11) art.3.1b Electromagnetic compatibility
- ETSI EN 301 489-3 V2.1.1 (2019-03) art.3.1 b Electromagnetic compatibility
- ETSI EN 301 489-17 V3.2.4 (2020-09) art.3.1b Electromagnetic compatibility
- ETSI EN 300 328 V2.2.2 (2019-07) art.3.2 Effective and coherent use of radio spectrum
- ETSI EN 300 220-2 V3.2.1 (2018-06) art.3.2 Effective and coherent use of radio spectrum
- ETSI EN 300 220-1 V3.1.1 (2017-02) art.3.2 Effective and coherent use of radio spectrum
- EN IEC 63000:2018 RoHS.

Wieprz, 25.02.2025


Paweł Jura Janusz Master
Company Chairmans

**UK
CA**

EAC

HOTLINE KLIMA-THERM:

(0)22 23 23 055

www.kaisai.com

**WE
CARE
ABOUT
AIR**

Owner's manual • Instrukcja obsługi • Bedienungsanleitung

